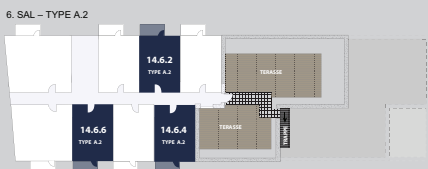
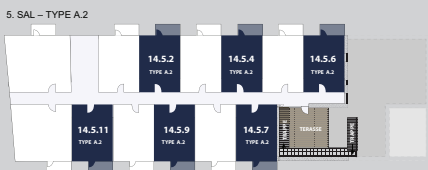
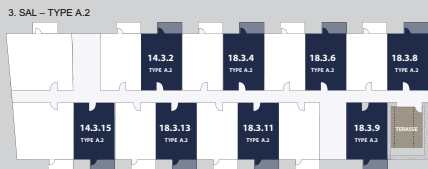
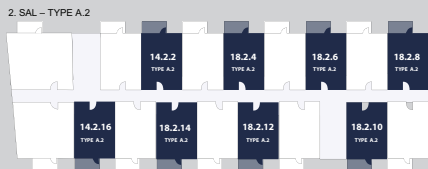
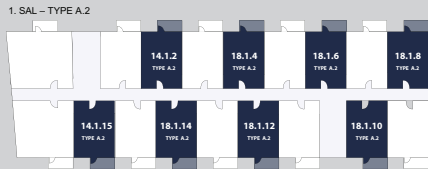


TRAPPEN



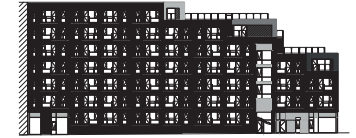
TYPE A.2

Godsbanen 14-18

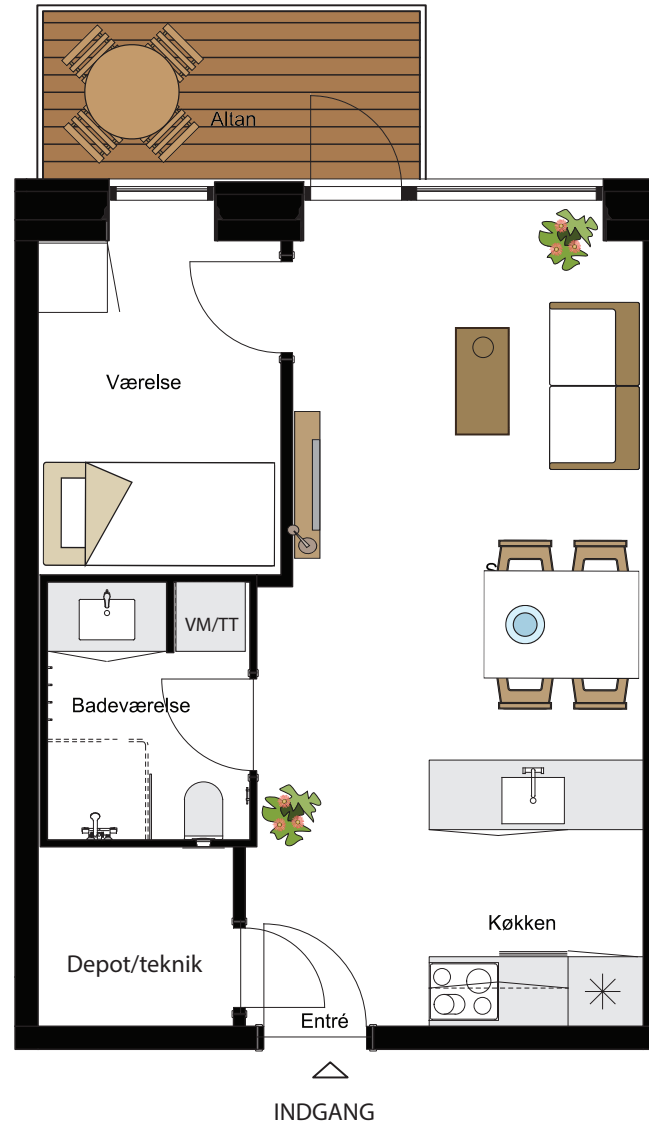
BBR bruttoetageareal ca.: 49 m²

+ egen altan ca.: 5 m²

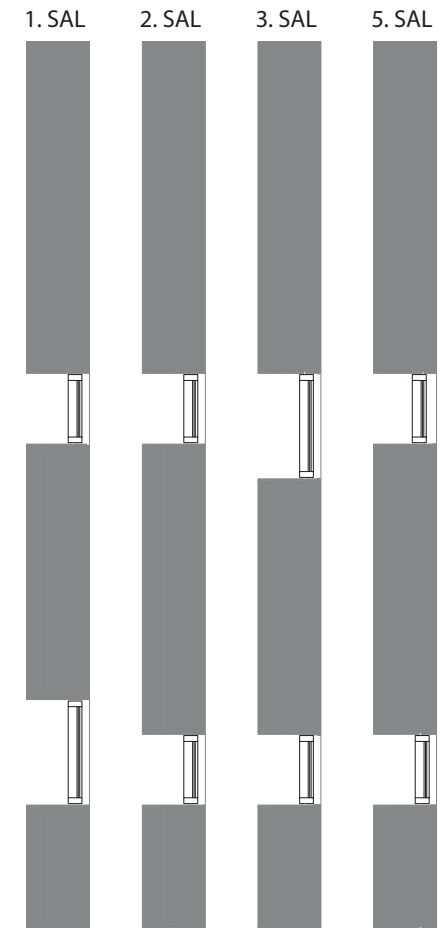
Samt adgang til fælles tagterrasser



VEST



VINDUER I GAVLE



Grundplanen er kun vejledende og kan ikke betragtes som bindende.
Generelt forbeholder udlejer sig ret til ændringer i løbet af byggeprocessen